


# CREATEX™



## PURE PIGMENT



- Concentrated
- Non-toxic
- Permanent
- Water-based
- Lightfast



PRODUCT INFORMATION AND USER GUIDE

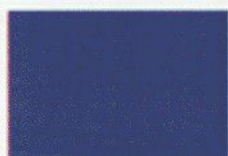
# Create your favorite color with Createx Pure Pigments!

Use this Pure pigment Color Guide to custom mix your own colors using Createx Pure Pigment Concentrated Colors. The ratios below provide a basic mixing chart to begin the magical process of making unique colors using your own imagination!

Each Pure Pigment color has a color reference number on the color chart. For example, Naphthol Red Light is Pure Pigment (PP) #7. Refer to these numbers when using the Mixing Guide. Apply the ratios by using single drops as units of measure. The following example uses a 1:1 ratio of Naphthol Red Light and Hansa Yellow Medium. Therefore, 1 drop each of PP#7 and PP#1 creates Pyrrole Red.

Once you have achieved the desired color using Pure Pigment, mix it with any Createx Medium to create a high quality professional grade paint.

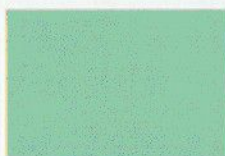
## COLOR MIXING GUIDE



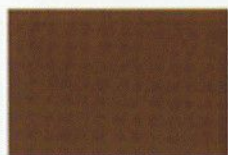
**Cobalt Blue**  
3PP#13:4PP#21:1PP#10



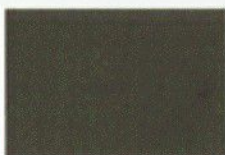
**Primary Blue**  
1PP#13:3PP#10



**Cobalt Turquoise**  
3PP#13:5PP#21:1PP#1



**Sepia**  
1PP#22:1PP#1:5PP#20



**Payne's Gray**  
2PP#13:3PP#7



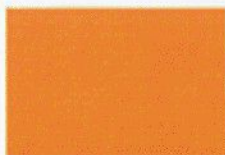
**Dioxazine Purple**  
5PP#10:1PP#13



**Quinacridone Red**  
1PP#21:15PP#10:3PP#1



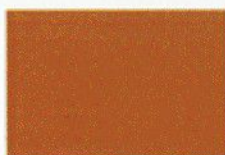
**Pyrrole Red**  
1PP#1:1PP#7



**Vat Orange**  
10PP#1:1PP#7



**Yellow Ochre**  
1PP#19:15PP#1:1PP#20



**Quinacridone Burnt Orange**  
30PP#10:25PP#1:1PP#13



**Primary Green**  
25PP#1:1PP#13





**Hansa Yellow Medium**  
 PY73/Very Good/Series 2  
 PP#1



**Dairylide Yellow**  
 PY83/Very Good/Series 4  
 PP#2



**Raw Sienna**  
 PBr7/Excellent/Series 1  
 PP#3



**Yellow Oxide**  
 PY43/Excellent/Series 1  
 PP#5



**Orange**  
 PO16/Fair/Series 1  
 PP#6



**Primary Red**  
 PR170/Excellent/Series 4  
 PP#7



**Naphthol Red Light**  
 PR12/Very Good/Series 4  
 PP#7



**Naphthol Red Medium**  
 PR5/Very Good/Series 2  
 PP#8



**Quinacridone Crimson**  
 PR202/Excellent/Series 4  
 PP#9



**Quinacridone Magenta**  
 PR122/Excellent/Series 4  
 PP#10



**Carbazole Violet**  
 PV23/Excellent/Series 4  
 PP#11



**Phthalo Blue (Red Shade)**  
 PB15:1/Excellent/Series 2  
 PP#12



**Phthalo Blue (Green Shade)**  
 PB15:3/Excellent/Series 2  
 PP#12



**Ultramarine Blue**  
 PB29/Excellent/Series 1  
 PP#13



**Prussian Blue**  
 PB27/Very Good/Series 2  
 PP#14



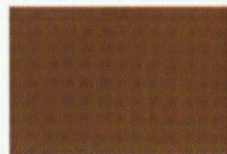
**Cerulean Blue**  
 PB36:1/Excellent/Series 4  
 PP#15



**Phthalo Green**  
 PG7/Excellent/Series 2  
 PP#16



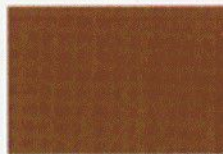
**Permanent Light Green**  
 PG36/Excellent/Series 2  
 PP#17



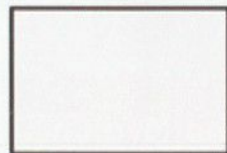
**Burnt Sienna**  
 PBr7/Excellent/Series 1  
 PP#18



**Red Oxide**  
 PR10/Excellent/Series 1  
 PP#19



**Burnt Umber**  
 PBr7/Excellent/Series 1  
 PP#20



**Titanium White**  
 PW6/Excellent/Series 1  
 PP#21



**Carbon Black**  
 PBik7/Excellent/Series 1  
 PP#22



# CREATEX™



**Creutex Pure Pigments are a unique color system** which allows artists to control all aspects of their paint. Artists have full control over color intensity, opacity, thickness, and flow. Use Pure Pigments to create Artists paints, Glazes, Airbrush Colors, Textile Colors, Screenprint Colors and Monotype Colors.

## **Use Pure Pigments to:**

- Create your own custom paint. Simply add drops to the Creutex Medium of your choice to create the right paint for virtually any project.
- Add to existing acrylic colors or any other water based acrylic to create custom blends or to add intensity.
- Use alone on paper for vivid watercolor applications.

## **What are Pure Pigments?**

Highly concentrated pigments dispersed in water, ready to add to Creutex Mediums. Just add a few drops of Pure Pigment to your favorite Creutex Mediums, or any other water based acrylic.

## **How do I use Pure Pigments?**

### ***Choose Your Pure Pigment Medium!***

Select the Creutex Medium you would like to use based on the surface or technique that you plan on using. i.e. Acrylic Medium for canvas painting, or Airbrush Medium for airbrushing.

### ***Mix Your Color!***

Gradually add Pure Pigment to Creutex Medium. A ratio of 1 part Pure Pigment to 8 parts Creutex Medium (1:8). This ratio will provide a vibrant color. Mix various mediums together to obtain desired thickness, flow, gloss, matte, etc.

### ***Increase Your Color Intensity!***

Slowly add more Pure Pigment to increase the chroma or intensity. We suggest remaining within a maximum ratio of 1 part Pure Pigment to 3 parts Creutex Medium (1:3). Add Pure Pigments to Multi-Surface Acrylic Paints, or any other acrylic color, to increase color intensity.

## **Paint Mixing Terms & Techniques**

*The following are some terms you may find helpful when mixing or using Pure Pigment Colors and Mediums.*

**Hue** - The name of a color family (yellow, blue, red, etc.).

**Value** - The relative lightness and darkness of a color.

**Chroma** - The strength or intensity of a color.

**Temperature** - The coolness or the warmth of a color. The coolest color is blue and the warmest color is red.

**Color Bias** - The tendency of a color to shade toward a different area of the color spectrum. For example, phthalo blue has a green shade and a red shade.

**Mass-Tone** - How a color appears at its most dense and opaque level.

**Undertone** - How a color appears in a thin layer revealing its more subtle properties.

**Dispersion** - The distribution of pigment within a vehicle.

**Transparency** - The ability of a color to allow us to see through it.

**Opacity** - The ability of a color to not allow us to see through it.



# Createx Acrylic Mediums

## SOFT GEL MEDIUM

**Create Acrylic Artists Paints** - Economically make a full-bodied transparent acrylic artist paint! Add Pure Pigment to Soft Gel Medium and stir thoroughly. Soft Gel Medium is useful for creating paints that blend well and flow smoothly from the brush.

**Glueing Collage Work** - Use Soft Gel Medium, alone, or tinted with Pure Pigments, as glue for attaching materials in collage work.

## IMPASTO GEL MEDIUM **Discontinued**

**Create Thick, Impasto, Acrylic Artist Paints** - Economically make thick, impasto acrylic colors! Add Pure Pigment to Impasto Gel Medium and mix thoroughly. Impasto Gel Medium is useful for creating paints that will retain brush strokes and is recommended for artists creating artwork with palette knives.

## OPAQUE MEDIUM

**Create Matte and Opaque Artists Paints** - Economically make a matte, opaque acrylic color! Add Createx Pure Pigment to Opaque Medium and mix thoroughly. Opaque Medium is useful for creating paints that will level easily and cover well in thin applications, also useful for creating paints similar to gouache.

**Increase Color Opacity and Paint Coverage** - Opaque Medium is useful for creating more opaque acrylic paints for better coverage.

**Create Pastel Color Palettes** - Mixing Opaque Medium with Pure Pigments will create opaque, pastel color palettes.

**Gesso Surfaces** - use Opaque Medium as a gesso to prepare surfaces for paint application. Tint Opaque Medium with Pure Pigments for coloring the gesso application.

## LYNTEX PAPER MEDIUM

**Create Acrylic Colors For Silkscreening or Painting on Paper** - Make acrylic colors ready to silkscreen or paint directly on paper with minimal distortion.

## GLOSS MEDIUM

**Create Glossy, Fluid Artist Paints** - Economically make thin, gloss and fluid acrylic colors! Add Pure Pigment to Gloss Medium and mix thoroughly. Gloss Medium is useful for creating paints that will level easily and cover well in thin applications.

**Increase Gloss of Acrylic Colors** - Mix Gloss Medium with Pure Pigments or acrylic colors to create paints with more surface gloss. **Unifying Color Sheen** - Mix with Pure Pigments to give surface sheens a consistent gloss.

## MATTE MEDIUM

**Create Matte, Fluid Artist Paints** - Economically make a flat, non-glossy acrylic color! Add Pure Pigment to Matte Medium and mix thoroughly. Matte Medium is useful for creating paints that will level easily and cover in thin applications.

**Gessoing Surfaces** - Use Matte Medium as a clear gesso to prepare surfaces for paint application. Tint Opaque Medium with Pure Pigments for coloring the gesso application.

**With Createx Pure Pigments and Mediums  
You control your paint - because you create it!**



## TEXTILE MEDIUM

**Create Acrylic Colors for Silkscreen or Textile Painting** - Economically make acrylic colors ready to screenprint or paint textiles! Heatset per label instructions for permanence.

**Provide Colors on Textiles with a "Soft Hand"** - This flexible medium allows pigment color to work into the fibers without forming a stiff film.

## GLAZING MEDIUM Discontinued

**Creating Slow Drying, Fluid Acrylic Glazes** - Economically make slow drying, fluid glaze colors! Add Pure Pigment to Glazing Medium and mix thoroughly. Glazing Medium is useful for creating thin, vibrant, transparent glazes for applications over underpaintings. Add Glazing Medium to existing acrylic colors for "wet-in-wet" painting techniques directly on the painting surface.

**Increase the Working Time of Acrylic Colors** - Mix Glazing Medium with Pure Pigments or acrylic colors to increase "open time".

**Increase Transparency** - Mixing Glazing Medium with acrylic colors will create more transparent, semigloss acrylic colors.

**Blend Acrylic Colors** - Mixing Glazing Medium with acrylic colors will allow colors to brush and blend together.

## AIRBRUSH MEDIUM

**Create Sprayable Acrylic Colors** - Economically make acrylic colors ready to apply to most any surface, including canvas, textiles, paper, leather, ceramics and wood! Add Createx Pure Pigment to Airbrush Medium and mix thoroughly.

**Create Thin, Intense Colors For Brush Application** - Mixing Airbrush Medium with acrylic colors will create very fluid acrylic colors for color wash effects.

## MONOTYPE MEDIUM Discontinued

**Create Water-based Monotype Colors** - Economically make monotype colors ready for transferring from plate to paper. Simply add Pure Pigments to monotype medium and paint on to glass, metal, or plexi-plate. When artwork is dried, transfer by hand, roller, or by press to wet paper.

## Troubleshooting

**The Color Wipes Off When Dry!** Add more Createx Medium to hold the Pure Pigment in the medium. Gradually add more Createx Medium to the color that you have created. Mix thoroughly.

**The Color in Matte Medium and Opaque Medium is too Weak!** Matte Medium and Opaque medium are dense mediums that are high in opacity. They require more Pure Pigment. We suggest starting with a ratio of 1 part Pure Pigment to 4 parts Createx Medium.

**The Paint is not Thick Enough!** Add Impasto Gel Medium to the color you have just created. The Impasto Gel Medium will give your paint more body and make it thicker. Pure Pigment and Createx Mediums are waterbased, so they all can easily be mixed with each other to help you create the custom paint with the characteristics that you desire.

**Remember to Heatset After Painting on Textiles!** Iron for 2 minutes at 300 F; use a protective cloth, keep iron moving or put in clothes dryer for 40 minutes at the highest heat setting.

Available from: [www.dixieart.com](http://www.dixieart.com)

DIXIE ART AIRBRUSH, PO Box 6433, Metairie LA 70005-2852

For more information:

[www.createxcolors.com](http://www.createxcolors.com)

Made in USA/Createx/East Granby, CT 06026